

THE STORY OF Proxima Nova

Proxima Nova Family

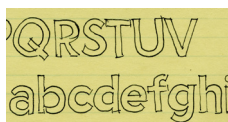
Proxima Nova Thin
Proxima Nova Thin Italic
 Proxima Nova Light
Proxima Nova Light Italic
 Proxima Nova Regular
Proxima Nova Regular Italic
 Proxima Nova Medium

Proxima Nova Medium Italic
 Proxima Nova Semibold
Proxima Nova Semibold Italic
 Proxima Nova Bold
Proxima Nova Bold Italic
 Proxima Nova Extrabold
Proxima Nova Extrabold Italic
 Proxima Nova Black
Proxima Nova Black Italic

Proxima Nova Condensed Thin
Proxima Nova Condensed Thin Italic
 Proxima Nova Condensed Light
Proxima Nova Condensed Light Italic
 Proxima Nova Condensed Regular
Proxima Nova Condensed Regular Italic
 Proxima Nova Condensed Medium
Proxima Nova Condensed Medium Italic
 Proxima Nova Condensed Semibold
Proxima Nova Condensed Semibold Italic
 Proxima Nova Condensed Bold
Proxima Nova Condensed Bold Italic
 Proxima Nova Condensed Extrabold
Proxima Nova Condensed Extrabold Italic
 Proxima Nova Condensed Black
Proxima Nova Condensed Black Italic

Proxima Nova Extra Condensed Thin
Proxima Nova Extra Condensed Thin Italic
 Proxima Nova Extra Condensed Light
Proxima Nova Extra Condensed Light Italic
 Proxima Nova Extra Condensed Regular
Proxima Nova Extra Condensed Regular Italic
 Proxima Nova Extra Condensed Medium
Proxima Nova Extra Condensed Medium Italic
 Proxima Nova Extra Condensed Semibold
Proxima Nova Extra Condensed Semibold Italic
 Proxima Nova Extra Condensed Bold
Proxima Nova Extra Condensed Bold Italic
 Proxima Nova Extra Condensed Extrabold
Proxima Nova Extra Condensed Extrabold Italic
 Proxima Nova Extra Condensed Black
Proxima Nova Extra Condensed Black Italic

PROXIMA NOVA is a typeface family I've been working on in various forms since 1981. I first called it **Zanzibar**, just because I liked the word *Zanzibar*. Even back then, the basic concept was there, especially in the lowercase. The caps took a bit longer to work out. ♦ In 1991, I was art director of *Business Ethics* magazine in which I was using Gill Sans. I liked it, but wished it was a bit plainer and more geometric. Such a face did not seem to exist.



ZANZIBAR SKETCH, C. 1981.

Starting from my Zanzibar idea, I began working on a new typeface that would fill this void, which I decided to call **Visigothic**, since it was modeled somewhat on American "gothic" faces. ► Some existing faces influenced the look of Visigothic. I wanted the general proportions and stroke contrast of Helvetica or Akzidenz Grotesk, but with construction and details borrowed variously from Futura, Kabel, the ATF gothics (Copperplate Gothic, News Gothic, Franklin Gothic, etc.) and the U.S. Federal Highway signage typeface. The result was a hybrid; a face combining modern, even-width proportions with a somewhat geometric appearance. ★ I released it through FontHaus in 1994 as **Proxima Sans**, a family of six fonts—Regular, Medium, and Black with matching italics. I dropped the name Visigothic because of its similarity to the name of another recently released font, Visigoth, and, after all, it really had nothing to do with Visigoths. I chose the name Proxima Sans because it was *near* to other *sans serifs* in design but also

Proxima Sans

PROXIMA SANS, 1994.

because those letters happened to display some of the distinctive characteristics of the design. ● I had plans to do more weights, small caps, a condensed version, and other ideas, but after having spent nearly three years developing the first release, sales were disappointing. That, coupled with becoming a new parent and taking on a new full-time job, I found I didn't have the time or energy to continue working on it for a while. ► By the early 2000s, I started to get requests to expand the Proxima Sans family and *Rolling Stone* magazine chose it as part of its redesign in 2003. Encouraged by all this, I began work on a new Proxima Sans family even more ambitious than I had originally planned. ♦ In 2005, I re-released it as **Proxima Nova**, a family of 42 fonts—seven weights and three widths with matching italics—built from the start with the OpenType format in mind, with advanced typographic features like small caps, different figure styles, fractions, and alternate characters, enough to take on the most demanding typographic applications. ● Proxima Nova contains other improvements over the original. I reviewed and refined every character. I rebuilt the italics from scratch. I redid the hinting for better on-screen display. The character set grew from 245 up to 699 characters (later expanding to 1085). I retained its special characters, like the arrows and other dingbats, but gave them proper Unicode values, and created proper math symbols in the positions they'd previously occupied. I scrapped and rebuilt the spacing and kerning. I dropped the ambiguous weight name "Medium" in favor of the more appropriate "Bold," and dropped "Oblique" in favor of the more accurate "Italic." As in Proxima Sans, the italics have been optically adjusted to eliminate the distortion caused by simply skewing the letters—*true italics*, not simple obliques. More recently, I added additional language support, including Cyrillic and Greek, and a new weight—Medium—bringing the total number of fonts in the family to 48. ■ —Mark Simonson

Features

CASE-SENSITIVE CHARACTERS

(x-ray) → (X-RAY)

TRUE SMALL CAPS

TRUE SMALL CAPS

LINING & OLD STYLE FIGURES

1234567890 \$¢€£¥
 1234567890 \$£¢€£¥

PROPORTIONAL AND TABULAR FIGURES

12345 → 12345
 12345 → 12345

FRACTION SUPPORT

2/3, 1/8, 53/72...
 → ⅔ ⅛, 53⁄72...

ORDINAL SUPPORT

1st, 2nd, 3rd, 4th...
 → 1st, 2nd, 3rd 4th...

ALTERNATE CHARACTERS

Gladly → Gladly
 01 → 01

LIGATURES

ff fi ffi fl ffl fb fh fj ffj fk

DINGBATS



EXTENDED LANGUAGE SUPPORT

ĐPŸĂĈĐĖŃĜĤĦĬŁŐŞŞĐ...
 ĐPŸĂĈĐĖŃĜĤĦĬŁŐŞ...
 đpÿăĉđęŋğhıķł'óștűod...

EXTENDED CURRENCY SUPPORT

\$¢€£¥ƒℳ℥ℱℙ℞ℝℙℙ
 ₱₹₹₹₹

Proxima Nova Display Sample Summary

PROXIMA NOVA THIN

1957 SPUTNIK 1958 EXPLORER 1961 VOSTOK 1962 MERC
1. MERCURY 2. VENUS 3. EARTH 4. MARS 5. JUPITER 6. SATU
Vexed Buzz quietly watched Neil jumping to mark the surf

PROXIMA NOVA LIGHT

1957 SPUTNIK 1958 EXPLORER 1961 VOSTOK 1962 MERC
1. MERCURY 2. VENUS 3. EARTH 4. MARS 5. JUPITER 6. SATU
Vexed Buzz quietly watched Neil jumping to mark the surf

PROXIMA NOVA REGULAR

1957 SPUTNIK 1958 EXPLORER 1961 VOSTOK 1962 MER
1. MERCURY 2. VENUS 3. EARTH 4. MARS 5. JUPITER 6. SAT
Vexed Buzz quietly watched Neil jumping to mark the su

PROXIMA NOVA MEDIUM

1957 SPUTNIK 1958 EXPLORER 1961 VOSTOK 1962 MER
1. MERCURY 2. VENUS 3. EARTH 4. MARS 5. JUPITER 6. SA
Vexed Buzz quietly watched Neil jumping to mark the su

PROXIMA NOVA SEMIBOLD

1957 SPUTNIK 1958 EXPLORER 1961 VOSTOK 1962 ME
1. MERCURY 2. VENUS 3. EARTH 4. MARS 5. JUPITER 6. SA
Vexed Buzz quietly watched Neil jumping to mark the su

PROXIMA NOVA BOLD

1957 SPUTNIK 1958 EXPLORER 1961 VOSTOK 1962 M
1. MERCURY 2. VENUS 3. EARTH 4. MARS 5. JUPITER 6. S
Vexed Buzz quietly watched Neil jumping to mark the s

PROXIMA NOVA EXTRABOLD

1957 SPUTNIK 1958 EXPLORER 1961 VOSTOK 1962 M
1. MERCURY 2. VENUS 3. EARTH 4. MARS 5. JUPITER 6.
Vexed Buzz quietly watched Neil jumping to mark the

PROXIMA NOVA BLACK

1957 SPUTNIK 1958 EXPLORER 1961 VOSTOK 1962
1. MERCURY 2. VENUS 3. EARTH 4. MARS 5. JUPITER 6.
Vexed Buzz quietly watched Neil jumping to mark the

Proxima Nova Display Sample Summary

PROXIMA NOVA THIN ITALIC

1957 SPUTNIK 1958 EXPLORER 1961 VOSTOK 1962 MERC
1. MERCURY 2. VENUS 3. EARTH 4. MARS 5. JUPITER 6. SATU
Vexed Buzz quietly watched Neil jumping to mark the surf

PROXIMA NOVA LIGHT ITALIC

1957 SPUTNIK 1958 EXPLORER 1961 VOSTOK 1962 MERC
1. MERCURY 2. VENUS 3. EARTH 4. MARS 5. JUPITER 6. SATU
Vexed Buzz quietly watched Neil jumping to mark the sur

PROXIMA NOVA REGULAR ITALIC

1957 SPUTNIK 1958 EXPLORER 1961 VOSTOK 1962 MER
1. MERCURY 2. VENUS 3. EARTH 4. MARS 5. JUPITER 6. SAT
Vexed Buzz quietly watched Neil jumping to mark the su

PROXIMA NOVA MEDIUM ITALIC

1957 SPUTNIK 1958 EXPLORER 1961 VOSTOK 1962 ME
1. MERCURY 2. VENUS 3. EARTH 4. MARS 5. JUPITER 6. SA
Vexed Buzz quietly watched Neil jumping to mark the su

PROXIMA NOVA SEMIBOLD ITALIC

1957 SPUTNIK 1958 EXPLORER 1961 VOSTOK 1962 ME
1. MERCURY 2. VENUS 3. EARTH 4. MARS 5. JUPITER 6. SA
Vexed Buzz quietly watched Neil jumping to mark the s

PROXIMA NOVA BOLD ITALIC

1957 SPUTNIK 1958 EXPLORER 1961 VOSTOK 1962 M
1. MERCURY 2. VENUS 3. EARTH 4. MARS 5. JUPITER 6. S
Vexed Buzz quietly watched Neil jumping to mark the s

PROXIMA NOVA EXTRABOLD ITALIC

1957 SPUTNIK 1958 EXPLORER 1961 VOSTOK 1962 M
1. MERCURY 2. VENUS 3. EARTH 4. MARS 5. JUPITER 6.
Vexed Buzz quietly watched Neil jumping to mark the

PROXIMA NOVA BLACK ITALIC

1957 SPUTNIK 1958 EXPLORER 1961 VOSTOK 1962
1. MERCURY 2. VENUS 3. EARTH 4. MARS 5. JUPITER 6.
Vexed Buzz quietly watched Neil jumping to mark th

Proxima Nova Display Sample Summary

PROXIMA NOVA CONDENSED THIN

1957 SPUTNIK 1958 EXPLORER 1961 VOSTOK 1962 MERCURY 1964 RAN
1. MERCURY 2. VENUS 3. EARTH 4. MARS 5. JUPITER 6. SATURN 7. URANUS
Vexed Buzz quietly watched Neil jumping to mark the surface. Vexed B

PROXIMA NOVA CONDENSED LIGHT

1957 SPUTNIK 1958 EXPLORER 1961 VOSTOK 1962 MERCURY 1964 R
1. MERCURY 2. VENUS 3. EARTH 4. MARS 5. JUPITER 6. SATURN 7. URANU
Vexed Buzz quietly watched Neil jumping to mark the surface. Vexed

PROXIMA NOVA CONDENSED REGULAR

1957 SPUTNIK 1958 EXPLORER 1961 VOSTOK 1962 MERCURY 1964
1. MERCURY 2. VENUS 3. EARTH 4. MARS 5. JUPITER 6. SATURN 7. URAN
Vexed Buzz quietly watched Neil jumping to mark the surface. Vexe

PROXIMA NOVA CONDENSED MEDIUM

1957 SPUTNIK 1958 EXPLORER 1961 VOSTOK 1962 MERCURY 1964
1. MERCURY 2. VENUS 3. EARTH 4. MARS 5. JUPITER 6. SATURN 7. URA
Vexed Buzz quietly watched Neil jumping to mark the surface. Vex

PROXIMA NOVA CONDENSED SEMIBOLD

1957 SPUTNIK 1958 EXPLORER 1961 VOSTOK 1962 MERCURY 19
1. MERCURY 2. VENUS 3. EARTH 4. MARS 5. JUPITER 6. SATURN 7. UR
Vexed Buzz quietly watched Neil jumping to mark the surface. Ve

PROXIMA NOVA CONDENSED BOLD

1957 SPUTNIK 1958 EXPLORER 1961 VOSTOK 1962 MERCURY 1
1. MERCURY 2. VENUS 3. EARTH 4. MARS 5. JUPITER 6. SATURN 7.
Vexed Buzz quietly watched Neil jumping to mark the surface. V

PROXIMA NOVA CONDENSED EXTRABOLD

1957 SPUTNIK 1958 EXPLORER 1961 VOSTOK 1962 MERCURY
1. MERCURY 2. VENUS 3. EARTH 4. MARS 5. JUPITER 6. SATURN 7.
Vexed Buzz quietly watched Neil jumping to mark the surface.

PROXIMA NOVA CONDENSED BLACK

1957 SPUTNIK 1958 EXPLORER 1961 VOSTOK 1962 MERCURY
1. MERCURY 2. VENUS 3. EARTH 4. MARS 5. JUPITER 6. SATURN
Vexed Buzz quietly watched Neil jumping to mark the surfac

Proxima Nova Display Sample Summary

PROXIMA NOVA CONDENSED THIN ITALIC

1957 SPUTNIK 1958 EXPLORER 1961 VOSTOK 1962 MERCURY 1964 RAN
1. MERCURY 2. VENUS 3. EARTH 4. MARS 5. JUPITER 6. SATURN 7. URANUS
Vexed Buzz quietly watched Neil jumping to mark the surface. Vexed B

PROXIMA NOVA CONDENSED LIGHT ITALIC

1957 SPUTNIK 1958 EXPLORER 1961 VOSTOK 1962 MERCURY 1964 R
1. MERCURY 2. VENUS 3. EARTH 4. MARS 5. JUPITER 6. SATURN 7. URANU
Vexed Buzz quietly watched Neil jumping to mark the surface. Vexed

PROXIMA NOVA CONDENSED REGULAR ITALIC

1957 SPUTNIK 1958 EXPLORER 1961 VOSTOK 1962 MERCURY 1964
1. MERCURY 2. VENUS 3. EARTH 4. MARS 5. JUPITER 6. SATURN 7. URAN
Vexed Buzz quietly watched Neil jumping to mark the surface. Vexe

PROXIMA NOVA CONDENSED MEDIUM ITALIC

1957 SPUTNIK 1958 EXPLORER 1961 VOSTOK 1962 MERCURY 1964
1. MERCURY 2. VENUS 3. EARTH 4. MARS 5. JUPITER 6. SATURN 7. URA
Vexed Buzz quietly watched Neil jumping to mark the surface. Vex

PROXIMA NOVA CONDENSED SEMIBOLD ITALIC

1957 SPUTNIK 1958 EXPLORER 1961 VOSTOK 1962 MERCURY 19
1. MERCURY 2. VENUS 3. EARTH 4. MARS 5. JUPITER 6. SATURN 7. UR
Vexed Buzz quietly watched Neil jumping to mark the surface. Ve

PROXIMA NOVA CONDENSED BOLD ITALIC

1957 SPUTNIK 1958 EXPLORER 1961 VOSTOK 1962 MERCURY 1
1. MERCURY 2. VENUS 3. EARTH 4. MARS 5. JUPITER 6. SATURN 7. U
Vexed Buzz quietly watched Neil jumping to mark the surface. V

PROXIMA NOVA CONDENSED EXTRABOLD ITALIC

1957 SPUTNIK 1958 EXPLORER 1961 VOSTOK 1962 MERCURY
1. MERCURY 2. VENUS 3. EARTH 4. MARS 5. JUPITER 6. SATURN 7.
Vexed Buzz quietly watched Neil jumping to mark the surface

PROXIMA NOVA CONDENSED BLACK ITALIC

1957 SPUTNIK 1958 EXPLORER 1961 VOSTOK 1962 MERCURY
1. MERCURY 2. VENUS 3. EARTH 4. MARS 5. JUPITER 6. SATURN
Vexed Buzz quietly watched Neil jumping to mark the surfac

Proxima Nova Display Sample Summary

PROXIMA NOVA EXTRA CONDENSED THIN

1957 SPUTNIK 1958 EXPLORER 1961 VOSTOK 1962 MERCURY 1964 RANGER 1965 GEMINI 1966
1. MERCURY 2. VENUS 3. EARTH 4. MARS 5. JUPITER 6. SATURN 7. URANUS 8. NEPTUNE 9. PLUTO?
Vexed Buzz quietly watched Neil jumping to mark the surface. Vexed Buzz quietly watched

PROXIMA NOVA EXTRA CONDENSED LIGHT

1957 SPUTNIK 1958 EXPLORER 1961 VOSTOK 1962 MERCURY 1964 RANGER 1965 GEMINI
1. MERCURY 2. VENUS 3. EARTH 4. MARS 5. JUPITER 6. SATURN 7. URANUS 8. NEPTUNE 9. PLU
Vexed Buzz quietly watched Neil jumping to mark the surface. Vexed Buzz quietly wat

PROXIMA NOVA EXTRA CONDENSED REGULAR

1957 SPUTNIK 1958 EXPLORER 1961 VOSTOK 1962 MERCURY 1964 RANGER 1965 GEM
1. MERCURY 2. VENUS 3. EARTH 4. MARS 5. JUPITER 6. SATURN 7. URANUS 8. NEPTUNE 9.
Vexed Buzz quietly watched Neil jumping to mark the surface. Vexed Buzz quietly

PROXIMA NOVA EXTRA CONDENSED MEDIUM

1957 SPUTNIK 1958 EXPLORER 1961 VOSTOK 1962 MERCURY 1964 RANGER 1965 G
1. MERCURY 2. VENUS 3. EARTH 4. MARS 5. JUPITER 6. SATURN 7. URANUS 8. NEPTUNE 9
Vexed Buzz quietly watched Neil jumping to mark the surface. Vexed Buzz quietl

PROXIMA NOVA EXTRA CONDENSED SEMIBOLD

1957 SPUTNIK 1958 EXPLORER 1961 VOSTOK 1962 MERCURY 1964 RANGER 196
1. MERCURY 2. VENUS 3. EARTH 4. MARS 5. JUPITER 6. SATURN 7. URANUS 8. NEPTUN
Vexed Buzz quietly watched Neil jumping to mark the surface. Vexed Buzz quie

PROXIMA NOVA EXTRA CONDENSED BOLD

1957 SPUTNIK 1958 EXPLORER 1961 VOSTOK 1962 MERCURY 1964 RANGER 1
1. MERCURY 2. VENUS 3. EARTH 4. MARS 5. JUPITER 6. SATURN 7. URANUS 8. NEP
Vexed Buzz quietly watched Neil jumping to mark the surface. Vexed Buzz q

PROXIMA NOVA EXTRA CONDENSED EXTRABOLD

1957 SPUTNIK 1958 EXPLORER 1961 VOSTOK 1962 MERCURY 1964 RANG
1. MERCURY 2. VENUS 3. EARTH 4. MARS 5. JUPITER 6. SATURN 7. URANUS 8.
Vexed Buzz quietly watched Neil jumping to mark the surface. Vexed Bu

PROXIMA NOVA EXTRA CONDENSED BLACK

1957 SPUTNIK 1958 EXPLORER 1961 VOSTOK 1962 MERCURY 1964 RA
1. MERCURY 2. VENUS 3. EARTH 4. MARS 5. JUPITER 6. SATURN 7. URANUS
Vexed Buzz quietly watched Neil jumping to mark the surface. Vexed

Proxima Nova Display Sample Summary

PROXIMA NOVA EXTRA CONDENSED THIN ITALIC

1957 SPUTNIK 1958 EXPLORER 1961 VOSTOK 1962 MERCURY 1964 RANGER 1965 GEMINI 1966
1. MERCURY 2. VENUS 3. EARTH 4. MARS 5. JUPITER 6. SATURN 7. URANUS 8. NEPTUNE 9. PLUTO?
Vexed Buzz quietly watched Neil jumping to mark the surface. Vexed Buzz quietly watche

PROXIMA NOVA EXTRA CONDENSED LIGHT ITALIC

1957 SPUTNIK 1958 EXPLORER 1961 VOSTOK 1962 MERCURY 1964 RANGER 1965 GEMINI
1. MERCURY 2. VENUS 3. EARTH 4. MARS 5. JUPITER 6. SATURN 7. URANUS 8. NEPTUNE 9. PLU
Vexed Buzz quietly watched Neil jumping to mark the surface. Vexed Buzz quietly wat

PROXIMA NOVA EXTRA CONDENSED REGULAR ITALIC

1957 SPUTNIK 1958 EXPLORER 1961 VOSTOK 1962 MERCURY 1964 RANGER 1965 GEM
1. MERCURY 2. VENUS 3. EARTH 4. MARS 5. JUPITER 6. SATURN 7. URANUS 8. NEPTUNE 9.
Vexed Buzz quietly watched Neil jumping to mark the surface. Vexed Buzz quietly

PROXIMA NOVA EXTRA CONDENSED MEDIUM ITALIC

1957 SPUTNIK 1958 EXPLORER 1961 VOSTOK 1962 MERCURY 1964 RANGER 1965 G
1. MERCURY 2. VENUS 3. EARTH 4. MARS 5. JUPITER 6. SATURN 7. URANUS 8. NEPTUNE 9
Vexed Buzz quietly watched Neil jumping to mark the surface. Vexed Buzz quietl

PROXIMA NOVA EXTRA CONDENSED SEMIBOLD ITALIC

1957 SPUTNIK 1958 EXPLORER 1961 VOSTOK 1962 MERCURY 1964 RANGER 196
1. MERCURY 2. VENUS 3. EARTH 4. MARS 5. JUPITER 6. SATURN 7. URANUS 8. NEPTUN
Vexed Buzz quietly watched Neil jumping to mark the surface. Vexed Buzz quie

PROXIMA NOVA EXTRA CONDENSED BOLD ITALIC

1957 SPUTNIK 1958 EXPLORER 1961 VOSTOK 1962 MERCURY 1964 RANGER
1. MERCURY 2. VENUS 3. EARTH 4. MARS 5. JUPITER 6. SATURN 7. URANUS 8. NEP
Vexed Buzz quietly watched Neil jumping to mark the surface. Vexed Buzz q

PROXIMA NOVA EXTRA CONDENSED EXTRABOLD ITALIC

1957 SPUTNIK 1958 EXPLORER 1961 VOSTOK 1962 MERCURY 1964 RANG
1. MERCURY 2. VENUS 3. EARTH 4. MARS 5. JUPITER 6. SATURN 7. URANUS 8.
Vexed Buzz quietly watched Neil jumping to mark the surface. Vexed Bu

PROXIMA NOVA EXTRA CONDENSED BLACK ITALIC

1957 SPUTNIK 1958 EXPLORER 1961 VOSTOK 1962 MERCURY 1964 R
1. MERCURY 2. VENUS 3. EARTH 4. MARS 5. JUPITER 6. SATURN 7. URANUS
Vexed Buzz quietly watched Neil jumping to mark the surface. Vexed

Proxima Nova OpenType Support & Usage Notes

OPENTYPE FEATURES SUPPORTED

Small Caps from Lowercase, All Small Caps, Standard Ligatures, Stylistic Alternates, Case-Sensitive Forms, Class-Based Kerning, Proportional Lining Figures, Tabular Lining Figures, Proportional Oldstyle Figures, Tabular Oldstyle Figures, Slashed Zero, Fractions, Ordinals, Superscript, and Scientific Inferior.

NOTE: Access to OpenType features requires application and/or operating system OpenType support.

ALTERNATE CHARACTER ACCESS

There are nine Stylistic Sets, providing flexible access to alternate characters in Proxima Nova:

	Roman	Italic
Set 1 (“Primer” Set)	a l y → a l y	<i>l y → l y</i>
Set 2 (“Futura” Set)	G a → G a	<i>G → G</i>
Set 3 (Alternate “G”)	G → G	<i>G → G</i>
Set 4 (Alternate roman “a”)	a → a	<i>a → a*</i>
Set 5 (Alternate italic “a”)	a → a*	<i>a → a</i>
Set 6 (Alternate “l”)	l → l	<i>l → l</i>
Set 7 (Alternate “y”)	y → y	<i>y → y</i>
Set 8 (Prime and double prime)	' " → ' "	<i>' " → ' "</i>
Set 9 (Serifed tabular figure 1)	1 → 1	<i>1 → 1</i>

* NO CHANGE

In programs that support Stylistic Sets, more than one Set may be applied at a time. For example, Stylistic Set 1 (the “Primer” Set) could be recreated by applying Sets 4, 6, and 7 all at once.

Note that Stylistic Sets 4 and 5 affect roman and italic differently. If you prefer to have a two-story lowercase “a” in italic as well as roman, apply Set 5. The roman “a” will retain its normal two-story design because Set 5 has no effect on the roman. Similarly, if you prefer to have a one-story “a” in both roman and italic, apply Set 4 instead, which changes the roman but not the italic.

STYLISTIC MAPPING (PLAIN, ITALIC, BOLD, BOLD ITALIC)

In Microsoft Office and other Windows applications, Proxima Nova is broken into smaller “sub-families” that work with the *I* (italic) and *B* (bold) buttons on toolbars.

Only the first member of each group appears in the font listing in such applications and is the “plain” style within that group. The others are “italic,” “bold,” and “bold italic” respectively:

GROUP 1: Thin, Thin Italic

GROUP 2: Light, Light Italic

GROUP 3: Regular, Regular Italic, Bold, Bold Italic

GROUP 4: Medium, Medium Italic

GROUP 5: Semibold, Semibold Italic

GROUP 6: Extrabold, Extrabold Italic

GROUP 7: Black, Black Italic

For example, to use Proxima Nova Bold Italic, choose Proxima Nova Regular from the font list and then click the *I* and *B* buttons on the toolbar (or use the keyboard shortcuts). Note: The “bold” button only works with the Regular style. The “italic” button works with all styles.

Stylistic mapping is the same for Condensed and Extra Condensed. Not all applications support stylistic mapping. Use of stylistic mapping is optional and not necessarily recommended for some pre-press workflows.

Proxima Nova Supplemental Fonts

HOW TO INSTALL THE SUPPLEMENTAL FONTS

The Proxima Nova supplemental fonts are installed the same way as any other fonts and may be installed alongside the standard version of Proxima Nova.

FONT NAMES

In applications that group fonts according to family, the standard Proxima Nova fonts will be in one group, the Small Caps and Old Style fonts in a second group, and the Alternate Character fonts in a third group. (Condensed and Extra Condensed are also grouped separately.)

The font names follow a consistent pattern to make it easy to find the font you need. For example:

SOME OF THE STANDARD FONTS:

Proxima Nova Regular
Proxima Nova Bold
Proxima Nova Condensed Thin Italic
Proxima Nova Extra Condensed Black

THE MATCHING SMALL CAP & OLD STYLE FIGURES FONTS:

Proxima Nova ScOsf Regular
Proxima Nova ScOsf Bold
Proxima Nova ScOsf Condensed Thin Italic
Proxima Nova ScOsf Extra Condensed Black

THE MATCHING ALTERNATE CHARACTER FONTS:

Proxima Nova Alt Regular
Proxima Nova Alt Bold
Proxima Nova Alt Condensed Thin Italic
Proxima Nova Alt Extra Condensed Black

Note: In some applications (MS Word, QuarkXPress, most Windows applications), the font names may be abbreviated.

USING THE FONTS

In general, use these the same way you would use any other separate fonts together. That is, select the text you wish to change and choose the font from the font menu.